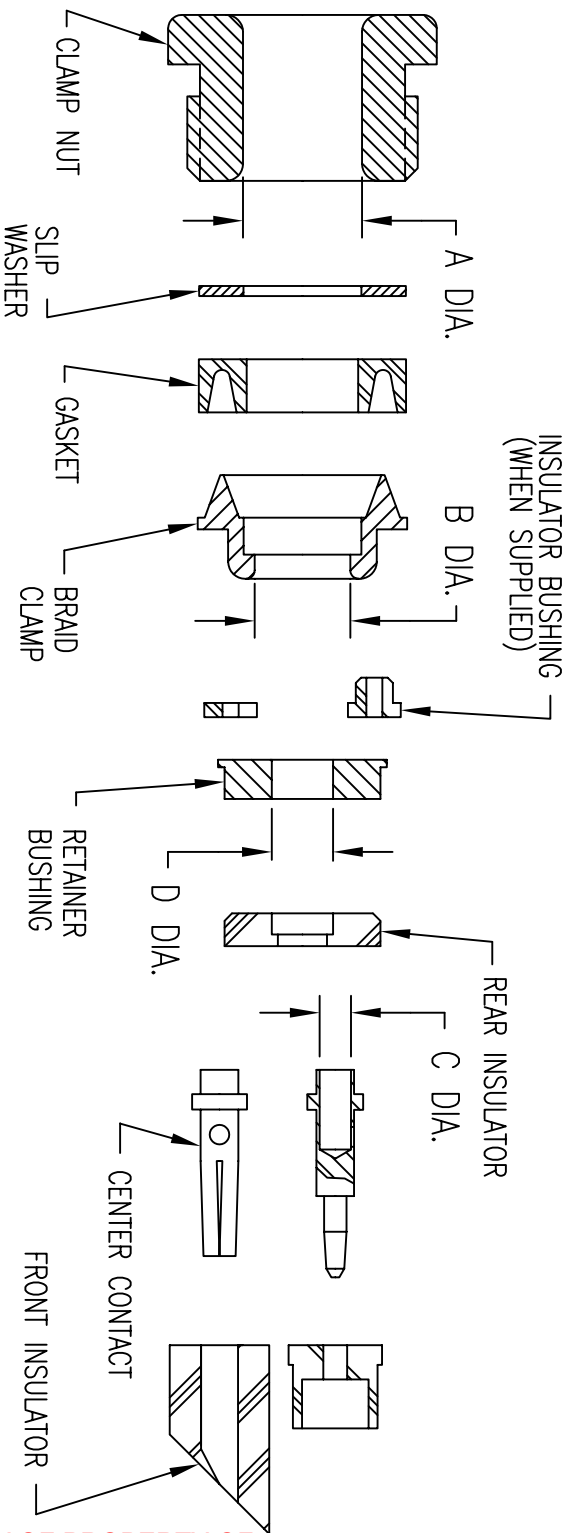


DASH NO.	M CODE	DESCRIPTION
-1		PERFORATED STRIP ON ROLL
-2	M88	INDIVIDUAL, CUT SHEETS
-3		PERFORATED STRIP IN GROUPS OF FIVE

3-70 (SHT 1 OF 2)

KINGS ELECTRONICS CO. INC. TUCKAHOE, NEW YORK



NOTES: 1. INSTRUCTION SHEET TO BE WHITE SULPHUR FREE PAPER.
 2. PRINT SHEETS 1 AND 2 ON BOTH SIDES OF SAME SHEET.
 REDUCE TO 2 1/2 IN. X 3 IN.

ISSUE	CHANGES	ISSUE	CHANGES	REVISIONS
1	CN 36658 E REDRAWN KH 10/25/95	3	CN 37495 B JW 11/14/97	REVISIONS
2	CN 32215 B PG 12/06/96			REVISIONS

DATE 10/25/95	DATE 10/26/95
DRAWN KH	APPR. MJB

MILITARY PART NUMBER	KINGS NUMBER	PIECE PART DIMS.			
		A	B	C	D
M39012/26-0101	KA-59-22	.22	.18	.044	.12
M39012/26-0102	KA-59-18	.26	.21	.033	.15
M39012/26-0103	KA-59-340	.18	.13	.044	.12
M39012/26-0104	KA-59-341	.18	.15	.044	.12
M39012/26-0117	KA-59-342	.22	.18	.033	.15
M39012/26-0018	KA-59-289	.12	.09	.022	.07
M39012/30-0101	KA-59-343	.22	.18	.044	.12
M39012/30-0102	KA-59-344	.26	.21	.033	.15
M39012/30-0103	KA-59-345	.18	.13	.044	.12
M39012/30-0104	KA-59-346	.18	.15	.044	.12
M39012/30-0117	KA-59-347	.22	.18	.033	.15
M39012/30-0118	KA-59-348	.12	.09	.022	.07

(OVER)

3-70 (SHT 1 OF 2)
KINGS
 ELECTRONICS CO., INC.
 TUCKAHOE, NEW YORK 10707

ISSUE	CHANGES	ISSUE	CHANGES
1	CN 36658 E REDRAWN KH 10/25/95	3	CN 37495 B JW 11/14/97
2	CN 37215 B PG 12/06/96		

REVISIONS	REVISIONS
DATE 10/25/95 DRAWN KH	DATE 10/26/95 APPR. MJB

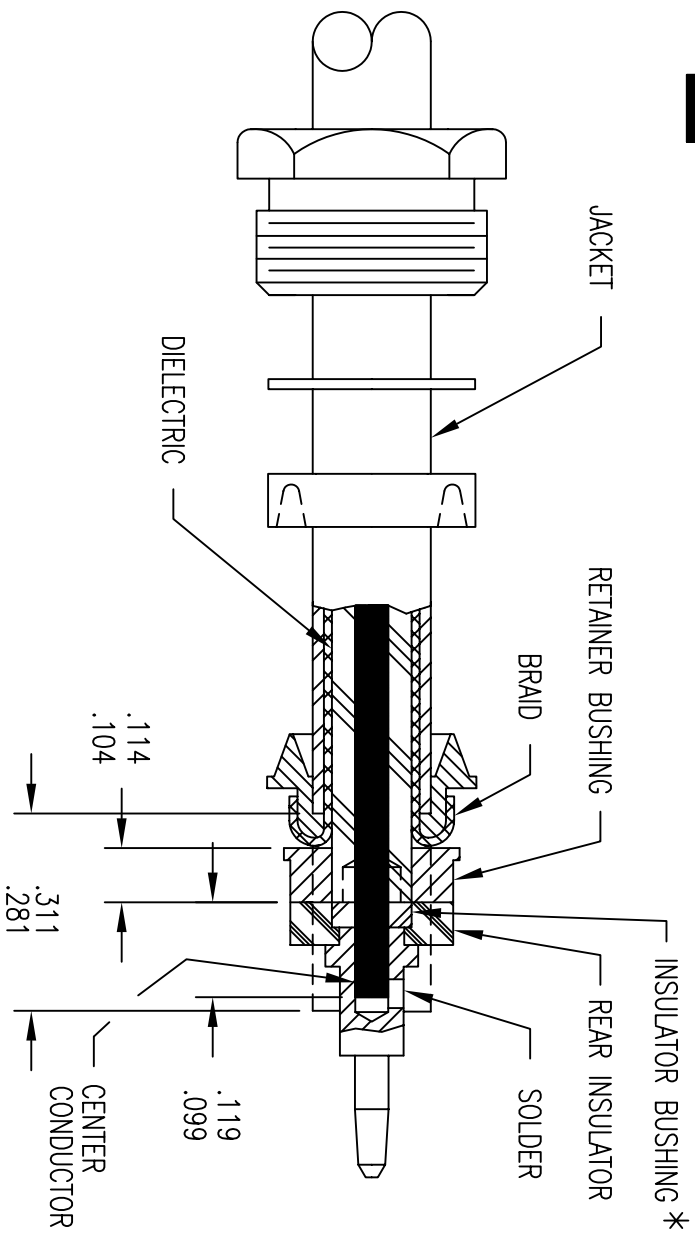
3-70	(SHT 2 OF 2)
------	--------------

(OVER)



KINGS ELECTRONICS CO. INC. TUCKAHOE, NEW YORK

3-70



REDUCE TO 2 1/2 IN. X 3 IN.

1. WITH CLAMP NUT, WASHER & GASKET ON CABLE, REMOVE JACKET TO .296 ±.015 DIM.
2. SLIDE BRAID CLAMP OVER BRAID AGAINST JACKET EDGE. COMB OUT BRAID WIRES, FOLD BACK OVER BRAID CLAMP & TRIM AS SHOWN.
3. REMOVE DIELECTRIC TO .109 ±.005 DIM. & TRIM CENTER CONDUCTOR TO .109 ±.010 DIM. * (WHEN INSULATOR BUSHING IS USED, SUBTRACT .031 FROM DIELECTRIC LENGTH & ADD .031 TO LENGTH OF CENTER CONDUCTOR)
4. PLACE RETAINER BUSHING, REAR INSULATOR & CENTER CONTACT ON CABLE AS SHOWN & SOLDER CONTACT IN PLACE.
5. INSERT FRONT INSULATOR INTO CONNECTOR BODY, THREAD ASSEMBLY INTO CONNECTOR BODY & LOCK SECURELY. RECOMMENDED TORQUE: SINGLE BRAIDED CABLES 30 IN. LBS. DOUBLE BRAIDED CABLES 35 IN. LBS.

3-70B