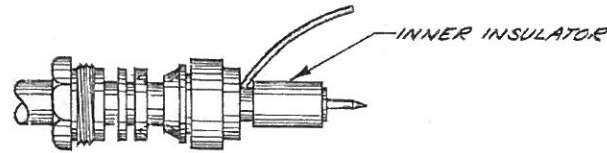
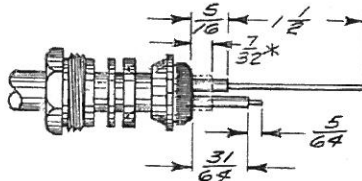


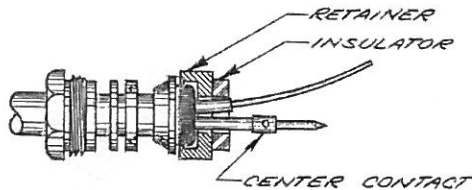
1. CUT CABLE END SQUARE. SLIDE CLAMP NUT, SLIP WASHER AND GASKET OVER JACKET. TRIM JACKET AND OUTER CONDUCTOR BRAID TO DIMENSIONS SHOWN.



2. COME OUT BRAID. PLACE BRAID CLAMP OVER BRAID AGAINST JACKET CUT.

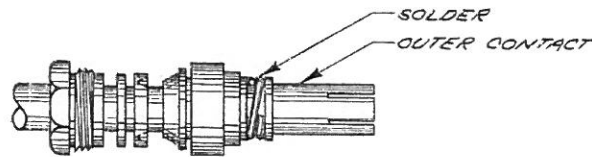


3. FOLD BRAID BACK OVER BRAID CLAMP AND TRIM AS SHOWN. TRIM DIELECTRICS, AND INNER CONDUCTORS TO DIMENSIONS SHOWN.

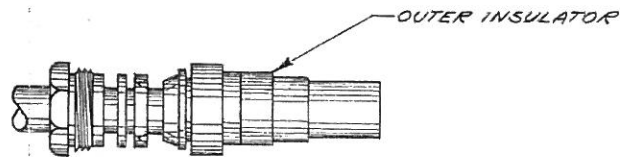


4. ASSEMBLE RETAINER AND INSULATOR. SOLDER CENTER CONTACT.

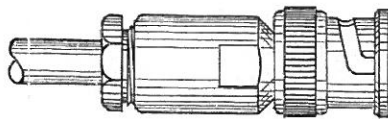
5. INSERT ASSEMBLY INTO INNER INSULATOR WITH REMAINING CONDUCTOR EXTENDING THROUGH SLOT.



6. ASSEMBLE OUTER CONTACT AGAINST INSULATOR. SEPARATE STRANDS BY REMOVING TWIST AND WRAP CONDUCTOR TIGHTLY AROUND OUTER CONTACT AND SOLDER.



7. ASSEMBLE OUTER INSULATOR OVER OUTER CONTACT.



8. INSERT ASSEMBLY INTO CONNECTOR BODY AND LOCK SECURELY. VEE GASKET MUST BE SPLIT BY BRAID CLAMP.

UNLESS OTHERWISE SPECIFIED:

- |  |  |
|--|--|
| 1. TOLERANCES: FRACTIONS & 2 PLACE DECIMALS $\pm .010$                                     | 2. REMOVE ALL BURRS, BREAK SHARP EDGES .005 MAX. |
| 3 PLACE DECIMALS $\pm .004$  | 3. NO FILLETS PERMITTED.                         |
| ANGLES $\pm 9^{\circ} 30'$   | 4. SURFACE ROUGHNESS 63 MICROINCHES RMS MAX.     |
| T. I. R. CONCENTRICITY OF ANY 2 DIAMETERS MAY NOT EXCEED HALF THE SUM OF THEIR TOLERANCES. | 5. ALL DIMENSIONS PRIOR TO PLATING.              |

\*FOR CABLE WITH WOVEN CLOTH LAYER TRIM AS SHOWN.

ITEM	REQ'D	DESCRIPTION	DRAWING NO.

REVISIONS

ISSUE	CHANGES
1.	CN 15820A
L1	17MAY76

C-59-316-1

REF.	
FINISH	
SPEC.	
MATL.	
SPEC.	

CABLING INSTRUCTIONS

DRAWN O. S.	DATE 19 JUL 71
APPR. L1	DATE 20 JUL 71

KINGS ELECTRONICS  
40 MARLBOROUGH ROAD  
TUCKAHOE, N. Y. 10707

C-59-316-1