

NOTES:

1 DIMENSIONS SHOWN IN BRACKETS ARE MILLIMETERS AND ARE FOR REFERENCE ONLY.

2 NO.1 CONTACT POSITION INDICATOR.

3 Δ =PLATING OPTIONS: CONSULT SALES

4 SURFACE FINISH ON 2 SIDES - 16 MICROINCHES MAX. FOR LENGTH SHOWN.

79-10-60- Δ -4498	.210 [5.33]
79-10-30- Δ -4498	.685 [17.40]
79-10-20- Δ -4498	.555 [14.10]
79-10-10- Δ -4498	.160 [4.06]

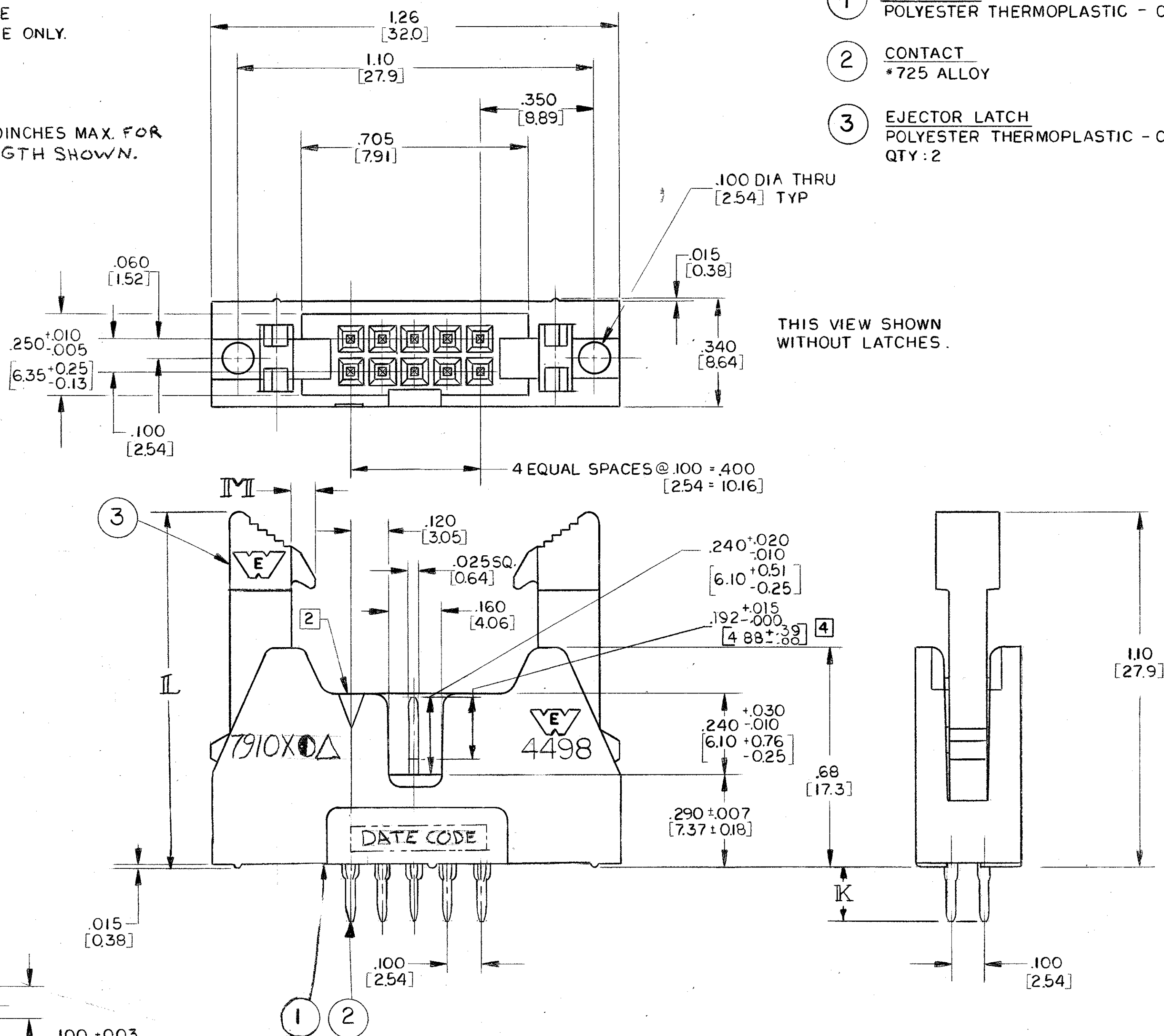
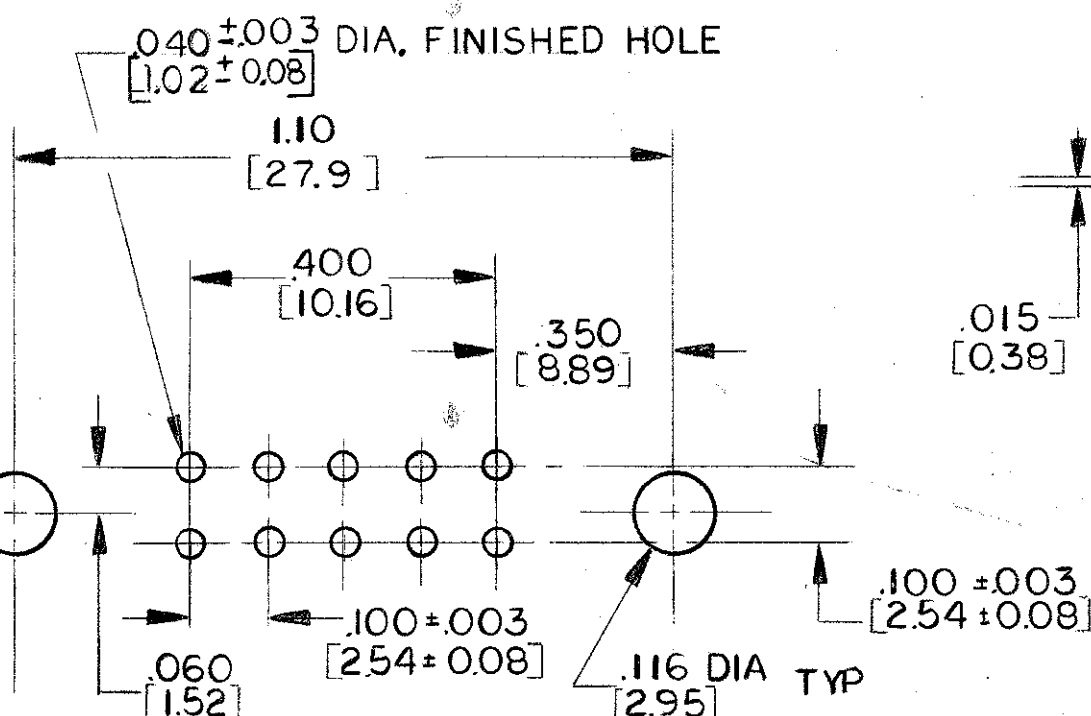
CATALOG NO.	K-TAIL LENGTH
-------------	---------------

4	1.10 [27.9]	-
3	.99 [25.1]	.05 [1.27]
2	1.10 [27.9]	.08 [2.03]
1	.96 [24.4]	.08 [2.03]
0	NO LATCHES	

\odot	L	M
---------	---	---

MOUNTING HOLE PATTERN

FOR P.C. BOARD
SCALE: NONE



- 1 INSULATOR
POLYESTER THERMOPLASTIC - COLOR: WHITE
- 2 CONTACT
*725 ALLOY
- 3 EJECTOR LATCH
POLYESTER THERMOPLASTIC - COLOR: WHITE
QTY: 2

THIS VIEW SHOWN WITHOUT LATCHES.

REV	CHANGE	DATE	BY	APP	DESCRIPTION
A	RELEASED EWR 266-83 EN 17871	4-85 U.L.L.	W.M.	BAS	211199
B	ADDED CENTER STANDOFF EN 16371	6/22/89 DONNA	W.M.	BAS	211199
C	PLATING OPTIONS EN 16371		W.M.	BAS	211199
D	ADDED CARTRIDGE EN 16371		W.M.	BAS	211199
E	ADDED LATCH EN 20226		W.M.	BAS	211199

GENERAL NOTES UNLESS OTHERWISE SPECIFIED

- ALL DIMENSIONS ARE IN INCHES
- ALL DIMENSIONS ARE TO MAX
- REMOVE ALL BURRS TO MAX
- BREAK ALL SHARP EDGES EQ. TO R MAX
- R MAX ON INSIDE CORNERS
- ALL DIAMETERS CONCENTRIC
- GENERAL SURFACE FINISH TO BE T.I.R. MAX
- TOLERANCES

CLASSIFICATION OF CHARACTERISTICS PER MIL-STD 105

XX ±.01
XXX ±.003
ANGLES ±

TITLE: 79-4498 SERIES HEADER
CONNECTOR, IO POSITION WITH CENTER SLOT CUSTOMER DWG.

SCALE: 4:1

DATE: 1-17-84

WINCHESTER ELECTRONICS
DIVISION OF LITTON SYSTEMS INCORPORATED
WATERTOWN, CONNECTICUT

DWG NO: 27243

37640

27243

1 SCANNED