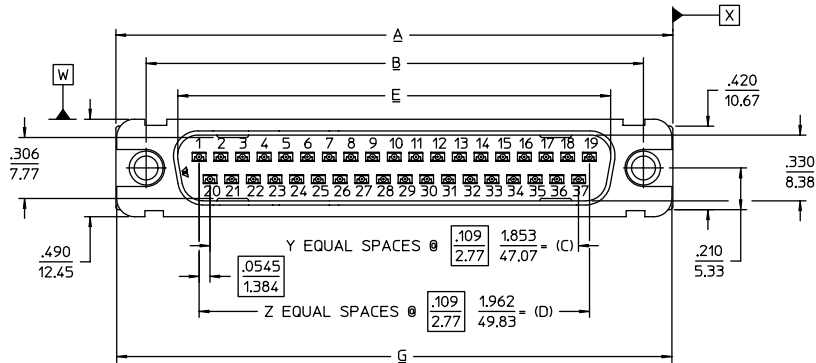


NOTES:

- 1 SEE DRAWING 27331 FOR PLATED THRU HOLE REQUIREMENTS.
2. FOR PIN CONNECTOR INSTALLATION USE INSERTION TOOL No. 107-42026.
- 3 CATALOG NUMBER, DATE CODE AND MANUFACTURING LOCATION CODE LOCATED APPROXIMATELY AS SHOWN ON SURFACE INDICATED.
- 4 SHIELD STAKED TO INSULATOR. (4X)
- 5 -● = MOUNTING OPTIONS:
 3 = #4 -40 UNC (THRU) STANDOFF
 4 = #2-56 UNC (THRU) STANDOFF
 5 = #4 -40 UNC (THRU) INSERT
 6 = #2-56 UNC (THRU) INSERT
 7 = GROUND STRAPS WITH THRU HOLES
 -Δ CONSULT SALES DEPT FOR SELECTIVE PLATING OPTIONS.

REV	DESCRIPTION	BY DATE	APPD
A	RELEASED PER ECR-ER1383	C.W.B. 08/28/06	V.B.H.



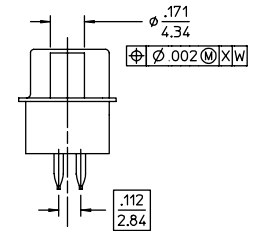
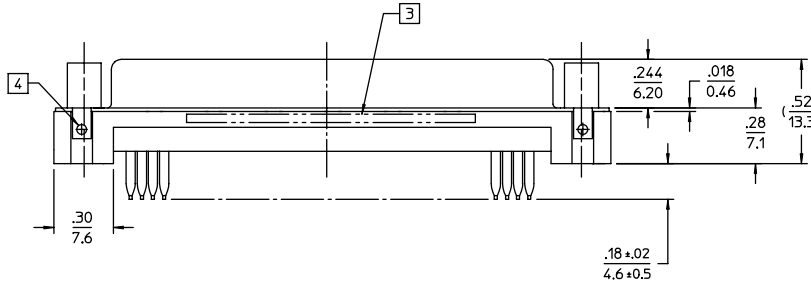
SPECIFICATIONS

MATERIALS

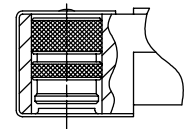
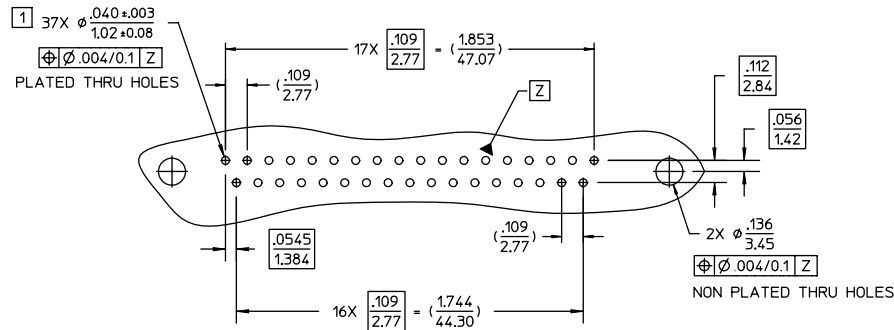
- C-Press® Contacts — Copper Alloy
Finish: Mating End = 30 Microinches Gold over 50 Microinches Nickel
Press-Fit End = Tin/Lead
- Insulator — Polyester, Glass Filled
Rated UL 94V-0. Color: Black
- Shield — Steel
Finish: Pure Tin
- Insert — Brass
- Standoff — Brass
- Ground Strap — Phosphor Bronze
Finish: Pure Tin

PERFORMANCE CHARACTERISTICS

- Insulation resistance — 5,000 megohms minimum
- Operating temperature range — -55°C to +105°C
- Current Rating — 1 amp at 70°C
3 amp at 20°C
- C-Press® Contact
Max. Insertion Force (per contact) — 40 lbs. / 178 N max
Min. Retention Force (per contact) — 10 lbs. / 44 N min



CATALOG No. 1891137P3D5554 SHOWN



INSERT OPTION 5

RECOMMENDED PC BOARD REQUIREMENTS
(COMPONENT SIDE OF BOARD SHOWN)

No. OF POSITIONS	CATALOG No.	A	B	C	D	E	G ^{±.015}	Y	Z
37	189-1137P-● -Δ 5554	2.77	2.500	1.853	1.962	2.182	2.729	17	18
		70.4	63.50	47.07	47.07	55.42	69.32		
25	189-1125P-● -Δ 5554	2.12	1.852	1.199	1.308	1.534	2.088	11	12
		53.8	47.04	30.45	33.22	38.96	53.04		
15	189-1115P-● -Δ 5554	1.58	1.312	.654	.763	.994	1.541	6	7
		40.1	33.32	16.61	19.38	25.25	39.14		
9	189-1109P-● -Δ 5554	.125	.984	.327	.436	.666	1.213	3	4
		31.8	24.99	8.31	11.07	16.92	30.81		

PER ASME Y14.5M-1994 UNLESS OTHERWISE SPECIFIED: DIMENSIONS ARE IN INCHES OR INCHES/MM TOLERANCES: DECIMALS .XX ± .01/0.3 .XXX ± .005/0.13 ANGLES ± ---- SCALE: 1:1		Winchester Electronics Corporation 62 Barnes Industrial Road North Wallingford, Connecticut 06492	
CUSTOMER DRAWING		TITLE D-SUB SHIELDED PIN CONNECTOR, WITH GROUND STRAPS (RoHS WITH C-PRESS EXCEPTION)	
DRAWN DATE C.W.B. 09/28/06	APPROVED DATE V.B.H. 09/29/06	APPROVED DATE A	SHT. 1 OF 1 REV. A

June 2006 - This drawing became the property of Winchester Electronics Corporation, Wallingford, CT.