

REV	DESCRIPTION	BY DATE	APPD
E	REVISED PER REC# 7849	C.M.B. 10/15/03	LMD

NX SERIES CODE ORDER CHART - MetCon-2® Shroud

NOTES:

- 1 FOR MIDPLANE APPLICATIONS, PC BOARD PLUS SHROUD THICKNESS GUARANTEE 3 MATING LEVELS (L1, L2, L3) AND A MINIMUM CONTACT WIPE LENGTH OF .098/2.5. PC BOARD AND CONTACT WIPE ARE BASED ON NOMINAL DIMENSION. TOLERANCES FOR PC BOARD MAY VARY AS MUCH AS 10%. CUSTOMERS ARE SUGGESTED TO USE ACTUAL PC BOARD THICKNESS TO CALCULATE MIDPLANE APPLICATION AND CONTACT LENGTH.
- 2 .0078/0.2 MAX GAP PERMISSIBLE TO PC BOARD.
3. SHROUDS ARE END STACKABLE ON A .07874/2.0 GRID.
- 4 SHROUD WITHOUT STANDOFFS FOR USE WITH .189/4.8 TO .220/5.6 PCB THICKNESS.

NX5SH07

STYLE B22 SHROUD, 154 TOTAL CONTACT POSITIONS, 44mm LONG

STEP 1 PC BOARD THICKNESS

CODE	PC BOARD (BACKPLANE) NOMINAL THICKNESS D		SHROUD HEIGHT DIMENSIONS	
	MINIMUM	MAXIMUM	C	B
19	.110/2.80	.125/3.18	.604/15.35	.193/4.90
15	.126/3.20	.157/4.00	.589/14.95	.177/4.50
09	.158/4.05	.188/4.78	.557/14.15	.146/3.70
00	.189/4.80	.220/5.60	.526/13.35	.114/2.90 4

SPECIFICATIONS

MATERIALS

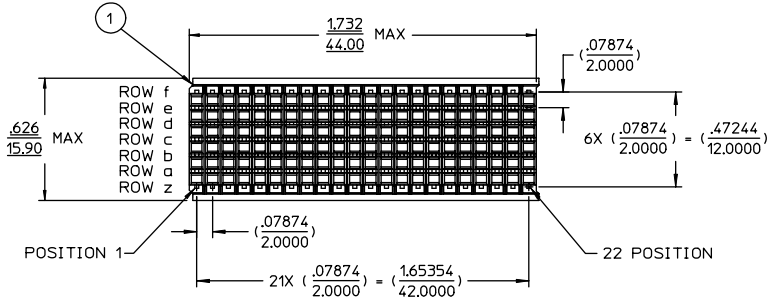
1 Shroud ————— Thermoplastic Polyester, glass filled
Rated UL 94V-0, Color: Gray

PERFORMANCE CHARACTERISTICS

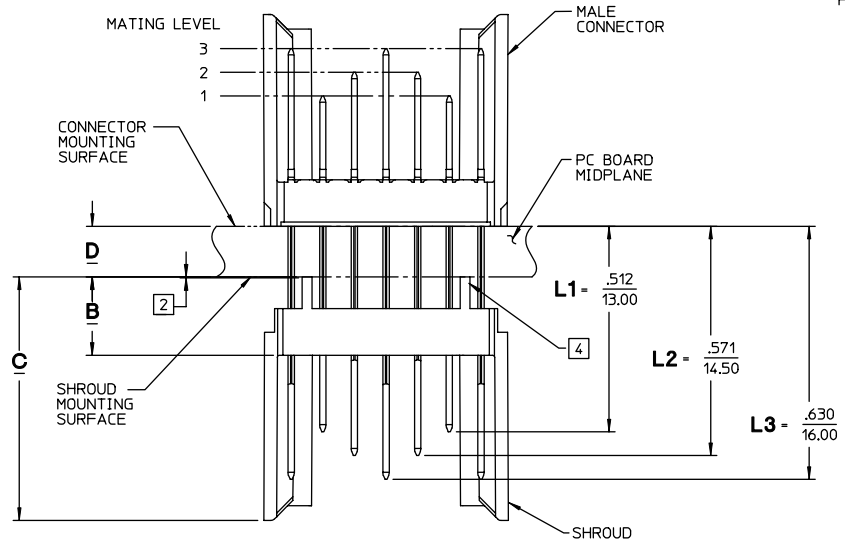
Insulation resistance ————— 5,000 megohms minimum
Operating temperature range ————— -55°C to +125°C
cUL Approved ————— File E31650

CUSTOMER TOOLING REQUIRED

DESCRIPTION	SEATING TOOL CATALOG No.	INSTRUCTION SHEET	DRAWING NUMBER
INSERTION TOOL TYPE B22	107-43897-03	43500	43897
REMOVAL TOOL TYPE B22	107-43955-01	43534	43955



CATALOG No. NX5SH0719 SHOWN



SHROUD TO HEADER ASSEMBLY
SCALE 2:1

PER ASME Y14.5M-1994 UNLESS OTHERWISE SPECIFIED: DIMENSIONS ARE IN INCHES OR INCHES/MM			
TOLERANCES:			
DECIMALS .XX ± .02/0.5			
.XXX ± .002/0.05			
ANGLES ± X°		SCALE: 1:1	
CUSTOMER DRAWING			
DRAWN	DATE	APPROVED	DATE
C.W.B.	06/08/99	W.P.M.	06/14/99
APPROVED	DATE	APPROVED	DATE
A.E.E.	06/14/99	S.W.A.	06/14/99

Litton
Winchester
Retconn
400 Park Road
Watertown, Connecticut
06795

TITLE
SHROUD REAR PLUG-UP APPLICATION STYLE B22

A	29688	SHT. 1 OF 1	REV. E
----------	-------	-------------	-----------