

REV	DESCRIPTION	BY DATE	APPD
G	REVISED PER ECR# 7849	C.M.B. 10/15/03	LMD

NX SERIES CODE ORDER CHART - MetCon-2® Shroud

NX5SH12

STYLE AB SHROUD, 150 TOTAL CONTACT POSITIONS, 44mm LONG

STEP 1 PC BOARD THICKNESS

CODE	PC BOARD (BACKPLANE) NOMINAL THICKNESS D		SHROUD HEIGHT DIMENSIONS	
	MINIMUM	MAXIMUM	C	B
19	.110/2.80	.125/3.18	.604/15.35	.193/4.90
15	.126/3.20	.157/4.00	.589/14.95	.177/4.50
09	.158/4.05	.188/4.78	.557/14.15	.146/3.70
00	.189/4.80	.220/5.60	.526/13.35	.114/2.90 [4]

NOTES:

- [1] FOR MIDPLANE APPLICATIONS, PC BOARD PLUS SHROUD THICKNESS GUARANTEE 3 MATING LEVELS (L1, L2, L3) AND A MINIMUM CONTACT WIPE LENGTH OF .098/2.5. PC BOARD AND CONTACT WIPE ARE BASED ON NOMINAL DIMENSION, TOLERANCES FOR PC BOARD MAY VARY AS MUCH AS 10%. CUSTOMERS ARE SUGGESTED TO USE ACTUAL PC BOARD THICKNESS TO CALCULATE MIDPLANE APPLICATION AND CONTACT LENGTH.
- [2] .0078/0.2 MAX GAP PERMISSIBLE TO PC BOARD.
3. SHROUDS ARE END STACKABLE ON A .07874/2.0 GRID.
- [4] SHROUD WITHOUT STANDOFFS FOR USE WITH .189/4.8 TO .220/5.6 PCB THICKNESS.

SPECIFICATIONS

MATERIALS

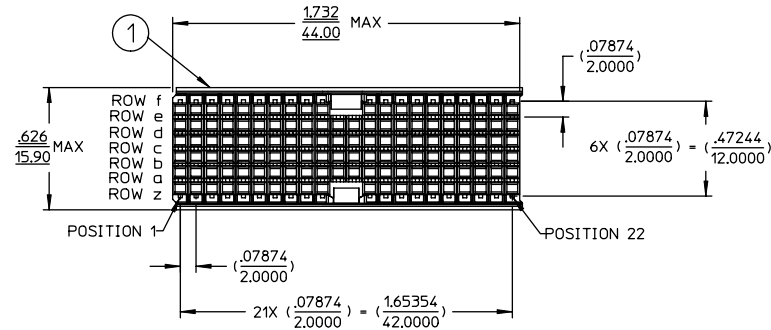
[1] Shroud ————— Thermoplastic Polyester, glass filled
Rated UL 94V-0. Color: Gray

PERFORMANCE CHARACTERISTICS

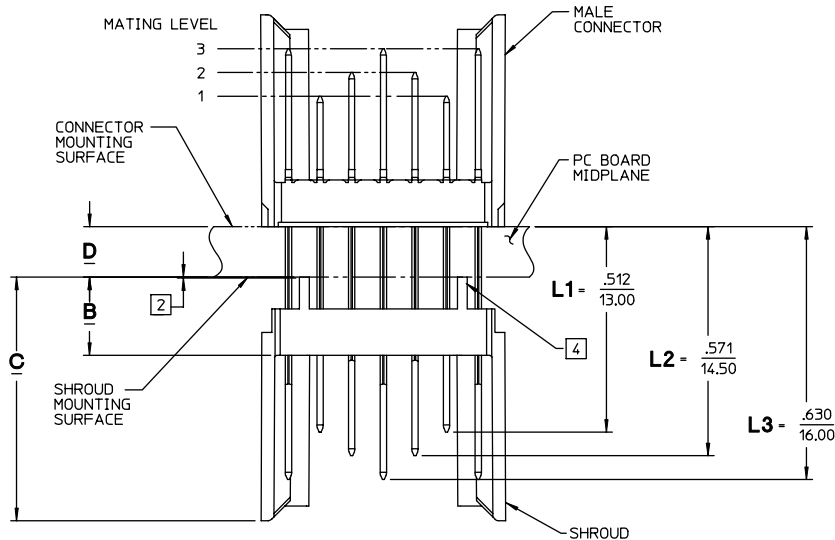
Insulation resistance ————— 5,000 megohms minimum
Operating temperature range ————— -55°C to +125°C
cUL Approved ————— File E31650

CUSTOMER TOOLING REQUIRED

DESCRIPTION	SEATING TOOL CATALOG No.	INSTRUCTION SHEET	DRAWING NUMBER
INSERTION TOOL TYPE AB22	107-43976-01	43500	43976
REMOVAL TOOL TYPE AB22	107-43955-01	43534	43955



CATALOG No. NX5SH1219 SHOWN



SHROUD TO HEADER ASSEMBLY

SCALE 2:1

PER ASME Y14.5M-1994
UNLESS OTHERWISE SPECIFIED:
DIMENSIONS ARE IN INCHES OR INCHES/MM
TOLERANCES:
DECIMALS .XX ± .02/0.5
.XXX ± .002/0.05
ANGLES ± X° SCALE: 1:1

NORTHROP GRUMMAN

Winchester Electronics

400 Park Road
Watertown, CT 06796

CUSTOMER DRAWING



TITLE
MetCon-2™
REAR PLUG-UP SHROUD
STYLE AB22

DRAWN	DATE	APPROVED	DATE
C.W.B.	06/09/99	W.P.M.	06/14/99
APPROVED	DATE	APPROVED	DATE
A.E.E.	06/14/99	S.W.A.	06/14/99

A	29691	SHT. 1 OF 1	REV. G
----------	-------	-------------	-----------