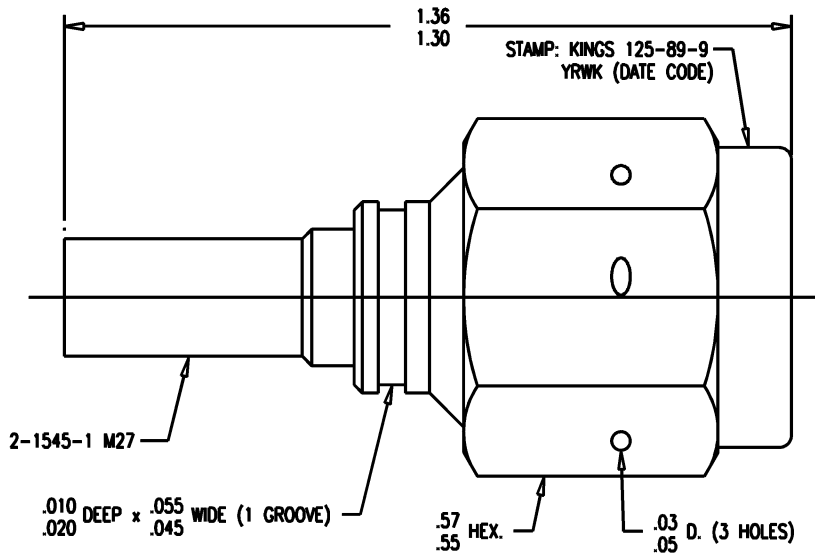


GSD

125-89-9



- NOTES:**
- FOR USE WITH BOEING S280W503-1 & ADAMS RUSSELL FC11Z CABLES.
 - FOR CABLING INSTRUCTIONS SEE 3-546-1.
 - FOR CRIMPING USE DIE KTH-2214.
 - INTERFACE PER MIL-STD-348, FIG. 313-1.
 - CENTER CONTACT (1-2359-1MA9) SUPPLIED UNASSEMBLED.
 - MARK PACKAGE: KINGS 125-89-9 YRWK (DATE CODE)
 - MATERIALS:**
 INSULATOR: TEFLON, ASTM-D-1457
 K-GRIP SLEEVE: COM. BRONZE TUBE, ALLOY 220
 CONTACT F-M: BER. COPPER, ASTM-B-196
 GASKET: SILICONE RUBBER, ZZ-R-765
 C-RING: PHOSPHOR BRONZE, QQ-B-750
 ALL OTHER METAL PARTS: BRASS, ASTM-B16
 - FINISHES:**
 CENTER CONTACTS: GOLD PLATE, PER MIL-G-45204
 ALL OTHER METAL PARTS: KINGS TARNISH RESISTANT FINISH (TR-5)
 - ELECTRICAL CHARACTERISTICS:**
 NOMINAL IMPEDANCE: 50 OHMS
 WORKING VOLTAGE: 500 VRMS
 FREQUENCY RANGE: DC TO 11 GHz.

REVISIONS

ISSUE	CHANGES	
0	ER 33877 JCA 04/23/92	
1	CN 38264 D TML 03/19/01	

WAS: JCA2732 125-89-9S

SCALE 4:1

APPROX SURFACE AREA

WAS: E-17338 & E-19904

USED ON

REF: BOEING

PLUG, TNC

DRAWN JCA DATE 04/23/92

DESIGN JT DATE 04/24/92

APPR. DATE

KINGS
 ELECTRONICS CO., INC.
 ROCK HILL, SOUTH CAROLINA 29730

125-89-9

GSD