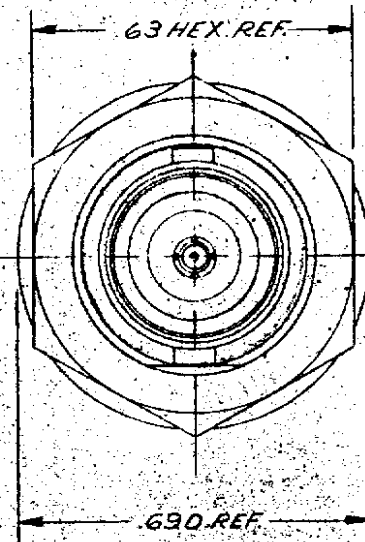


MOUNTING HOLE



STAMP: 91836 M39012/19-0014

KC-19-208 XXXX

DATE CODE

NOTES:

1. FOR USE WITH RG-55A, 142, 142A & 2231U CABLE.
2. FOR CABLE TRIMMING USE KTJ-113 & KTD-166.
3. FOR FORMING USE CRIMP DIE SIZE 01.
4. FOR CABLING INSTRUCTIONS SEE CP-465.

UNLESS OTHERWISE SPECIFIED:

- | | |
|--|--|
| 1. TOLERANCES: FRACTIONS & 2 PLACE DECIMALS ±.010 | 2. REMOVE ALL BURRS. BREAK SHARP EDGES .005 MAX. |
| 3 PLACE DECIMALS ±.004 | 3. NO FILLETS PERMITTED. |
| T. I. R. CONCENTRICITY OF ANY 2 DIAMETERS MAY NOT EXCEED HALF THE SUM OF THEIR TOLERANCES. | 4. SURFACE ROUGHNESS 63 MICRONS RMS MAX. |
| | 5. ALL DIMENSIONS PRIOR TO PLATING. |

ITEM	REQ'D	DESCRIPTION	DRAWING NO.
9	1	CABLING INSTRUCTIONS	3-89-2MB8
8	1	TNC CRIMP CAPTIVE CONTACT F	1-521-27M9D
7	1	INSULATOR	
6	1	RETAINING RING	
5	1	HEX NUT	492A-9-MC7
4	1	LOCK WASHER	492A-12-MC7
3	1	GASKET	492A-10-M99
2	1	BODY	
1	1	K-GRIP SLEEVE	5-89-05-2MC7

REVISIONS	
ISSUE	CHANGES
0	ER 11862 J.G.L. 24 JAN 73
1	CN 12413A WE 11 JUL 73
2	CN 21732C M.A. 30 MAR 81
5	CN 32279A LNM 14 JUN 90

M39012/19-0014

KC-19-208	
REF.	
FINISH	
SPEC.	KER-10004
MATL.	
SPEC.	
BNC BULKHEAD JACK	
DRAWN	J.G.L. DATE 24 JAN 73
APP'D	L.I. DATE 24 JAN 73
KINGS ELECTRONICS 40 MARLEDALE ROAD TUCKAHOE, N. Y. 10797	
DRAWING NO. M39012/19-0014	