

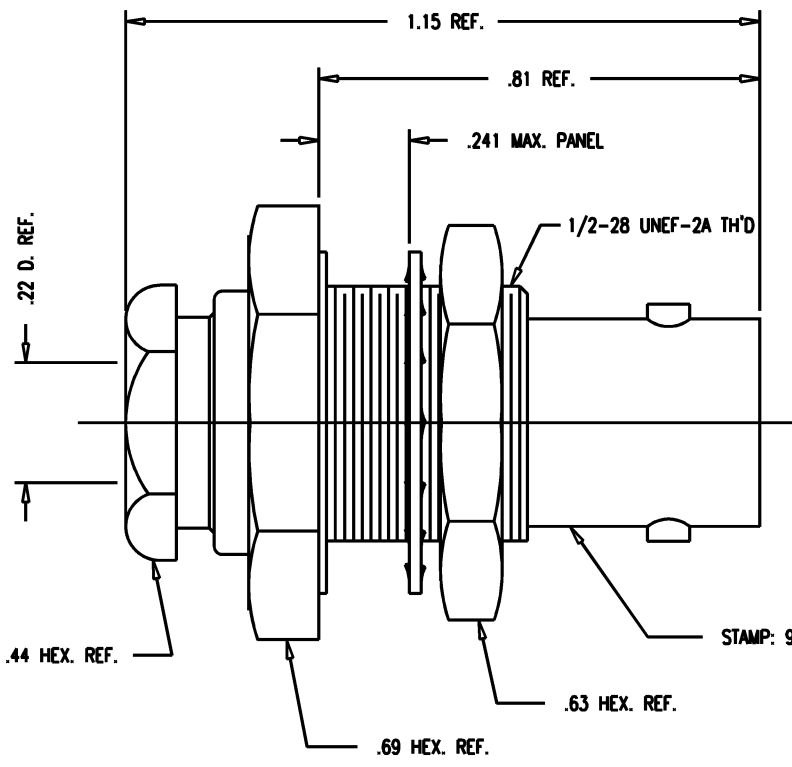
DASH NO.	M CODE	MADE FROM
----------	--------	-----------

# GSD

M39012/19-0101

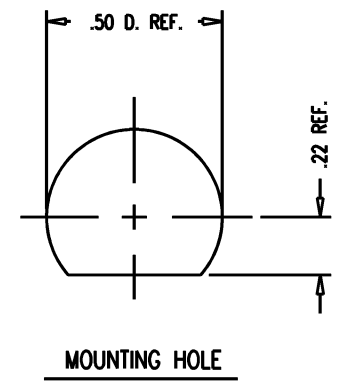
**REVISIONS**

ISSUE	CHANGES
4	CN 32279 A LNM 14 JUN 90
5	CN 32904 C KH 03/18/91



STAMP: 91836 M39012/19-0101  
 KC-19-282 XXXX  
 DATE CODE

- NOTES:**
- FOR USE WITH RG-58, 141, 142, 223 AND 400/U CABLE.
  - FOR CABLING INSTRUCTIONS SEE CP-1050.
  - MATERIALS:**  
 INSULATORS-TEFLON, ASTM-D-1457  
 GASKETS-SILICONE RUBBER, ZZ-R-765  
 LOCKWASHER-PHOSPHOR BRONZE, QQ-B-750  
 CENTER CONTACT- BER. COP., ASTM-B-196 C17300  
 ALL OTHER METAL PARTS-BRASS, QQ-B-626
  - FINISHES:**  
 CENTER CONTACT-GOLD PLATE PER MIL-G-45204  
 ALL OTHER METAL PARTS-SILVER PLATE PER QQ-S-365
  - ELECTRICAL CHARACTERISTICS:**  
 NOMINAL IMPEDANCE-50 OHMS  
 FREQUENCY RANGE-DC TO 4 GHZ  
 WORKING VOLTAGE-500 VRMS



MOUNTING HOLE

# GSD

SCALE 4:1
APPROX SURFACE AREA KC-19-282
USED ON
REF:
JACK, BULKHEAD, BNC
DRAWN KH DATE 07/13/90
DESIGN MJB DATE 07/17/90
APPR. DATE

**KINGS**  
 ELECTRONICS CO., INC.  
 TUCKAHOE, NEW YORK 10707  
 M39012/19-0101