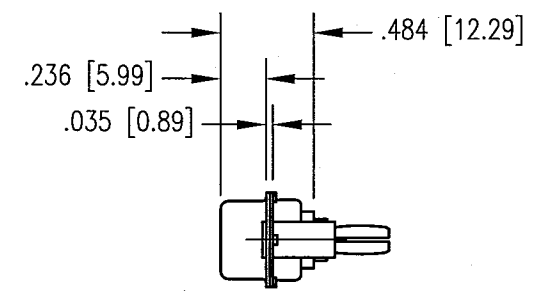
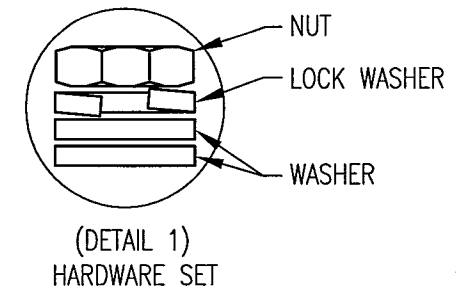
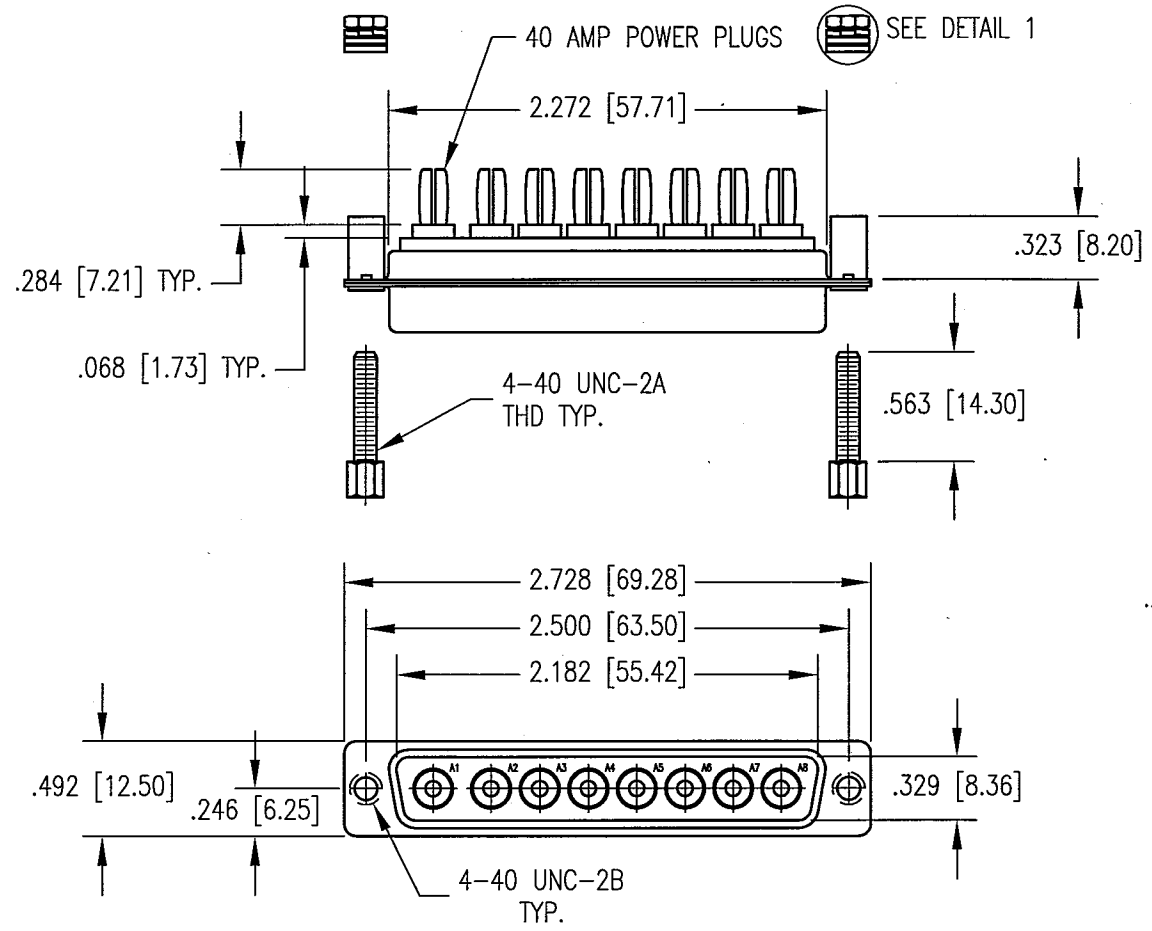


DWG. NO.		RM8W8P-1019	
REV	DESCRIPTION	BY DATE	APPD
E	ECR 7473	JH 9/13/02	JH



PER ASME Y14.5M-1994 UNLESS OTHERWISE SPECIFIED: DIMENSIONS ARE IN INCHES (MM)		NORTHROP GRUMMAN	
TOLERANCES: DECIMALS .XX ± .01 [0.254] XXX ± .005 [0.127] ANGLES ± 2'		Winchester Electronics 400 Park Road Watertown, CT 06795	
SCALE: 1:1		TITLE 8W8P HOUSING WITH 40 AMP PRESS-FIT POWER PLUG	
CUSTOMER DRAWING		A RM8W8P-1019	
DRAWN JED	DATE 6/30/99	CHECKED TLB	DATE 6/30/99
APPROVED JMC	DATE 6/30/99	APPROVED CCA	DATE 6/30/99
SHT. OF 1 3		REV. E	

DWG. NO.			
RM8W8P-1019			
REV	DESCRIPTION	BY DATE	APPD
	SEE SHEET 1		

CONNECTORS

SIZE 8 CONTACTS

1. MATERIALS

INSULATORS: VALOX TYPE GPT-30F PER MIL-M-24519
SHELL: STEEL PER ASTM A568

2. FINISHES AND COLOR:

INSULATOR: GREEN
SHELLS: YELLOW CHROMATE OVER ZINC PER ASTM B633

3. ELECTRICAL PROPERTIES:

DIELECTRIC STRENGTH: 500 VOLTS RMS AT SEA LEVEL
200 VOLTS RMS AT 70,000 FT. ELEVATION
INSULATION RESISTANCE: 1 MEGOHM MINIMUM

4. MECHANICAL PROPERTIES:

OPERATING TEMPERATURE: -55 DEG. CELSIUS TO 125 DEG. CELSIUS
SHOCK RESISTANCE: MIL-STD-1344, CONDITION E, METHOD 2004
VIBRATION RESISTANCE: MIL-STD-1344, CONDITION 4, METHOD 2005

5. CONNECTOR MEETS OR EXCEEDS THE REQUIREMENTS OF MIL-C-24308, LATEST REVISION

6. CONTACT ARRANGEMENTS AS SHOWN

1. MATERIALS

BODIES: PHOSPHOR BRONZE PER ASTM B139-90 ALLOY C54400 BZ4 (C.D.A. 544)
INSERT: SILICONE RUBBER PER ZZ-R-765
CLIP RING: BERYLLIUM COPPER PER ASTM B194

2. FINISHES AND COLOR:

BODY: .000050 MIN. GOLD PER MIL-G-45204
OVER .000050 MIN. NICKEL PER QQ-N-290
CLIP RING: 000100 MIN. NICKEL PER QQ-N-290 OVER COPPER FLASH

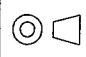
3. ELECTRICAL PROPERTIES:

CURRENT RATING: 40 AMPS AT AN AMBIENT EQUIPMENT OPERATING TEMPERATURE OF 65° OR LESS
CONTACT RESISTANCE: 1 MEGOHM MAXIMUM

4. MECHANICAL PROPERTIES:

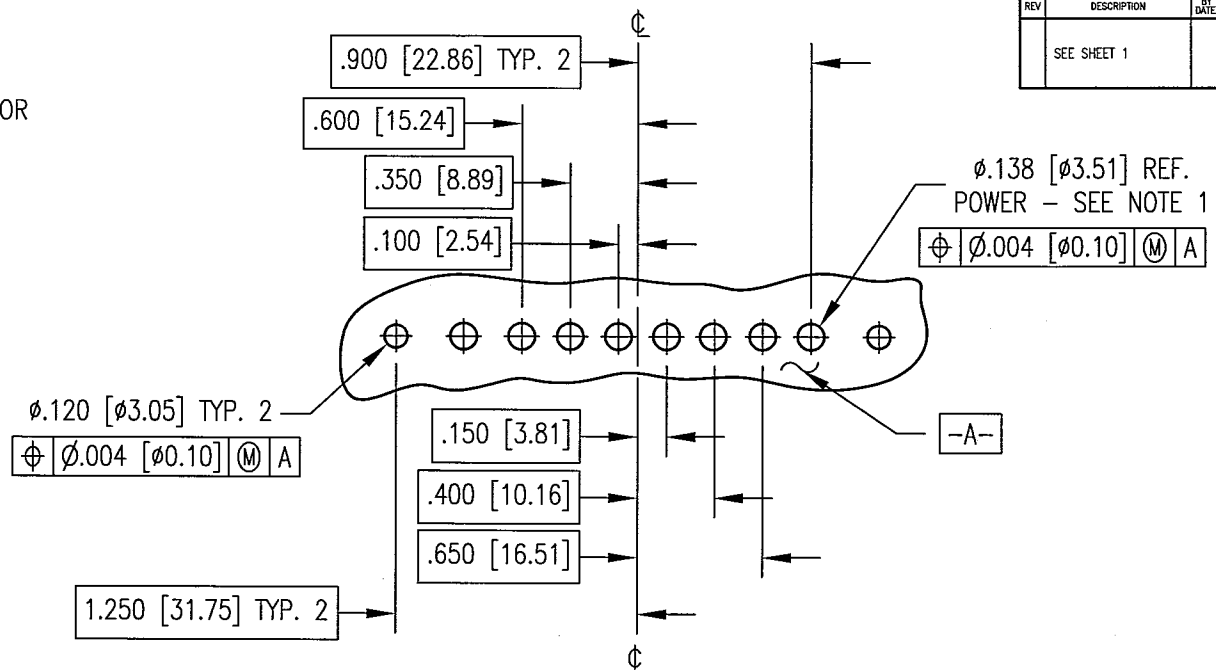
COAXIAL CONTACT ENGAGEMENT: 3 POUNDS MAXIMUM
COAXIAL CONTACT RETENTION IN HOUSING: 15 POUNDS MINIMUM AXIAL FORCE
COAXIAL CONTACT SEPARATION: 2 OUNCES MINIMUM
P.C.B. INSERTION FORCE: 75 LBS. MAXIMUM
P.C.B. RETENTION FORCE: 20 LBS. MINIMUM
OPERATING TEMPERATURE: -55 DEG. CELSIUS TO 125 DEG. CELSIUS
SHOCK RESISTANCE: MIL-STD-202, CONDITION I, METHOD 213
VIBRATION RESISTANCE: MIL-STD-202, CONDITION B, METHOD 204

5. CONTACT ARRANGEMENTS AS SHOWN

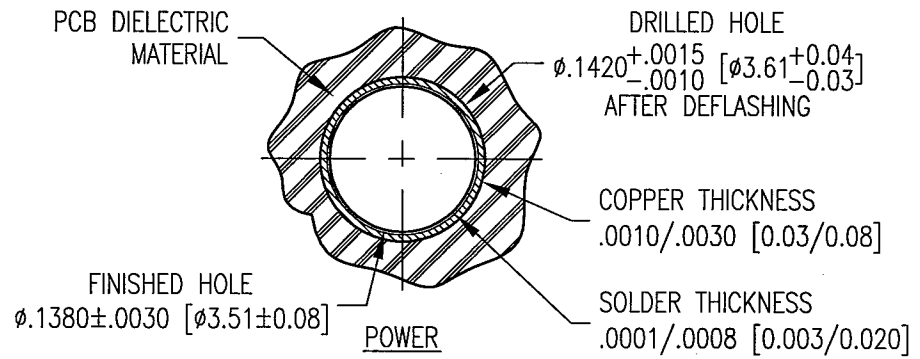
PER ASME Y14.5M-1994 UNLESS OTHERWISE SPECIFIED: DIMENSIONS ARE IN INCHES (MM)				NORTHROP GRUMMAN			
TOLERANCES: DECIMALS .XX ± .01 [0.254] .XXX ± .005 [0.127] ANGLES ± 2° SCALE: N/A				Winchester Electronics 400 Park Road Watertown, CT 06795			
CUSTOMER DRAWING						TITLE	
DRAWN DATE JED 6/30/99			CHECKED DATE TLB 6/30/99			8W8P HOUSING WITH 40 A,P PRESS-FIT POWER PLUGS	
APPROVED DATE JMC 6/30/99		APPROVED DATE CCA 6/30/99		A		REV. OF	
RM8W8P-1019				SHT. OF		E	
				2 3			

DWG. NO.		RM8W8P-1019	
REV	DESCRIPTION	BY DATE	APPD
	SEE SHEET 1		

NOTES:
 1. REFER TO PRESS-FIT HOLE REQUIREMENTS VIEW FOR PLATED THRU HOLE SPECIFICATIONS.



RECOMMENDED MOUNTING HOLE LAYOUT
 (VIEWED FROM COMPONENT SIDE OF PCB)



PER ASME Y14.5M-1994 UNLESS OTHERWISE SPECIFIED: DIMENSIONS ARE IN INCHES [MM]		NORTHROP GRUMMAN																	
TOLERANCES: DECIMALS .XX ± .01 [0.254] XXX ± .005 [0.127] ANGLES ± 2°		Winchester Electronics 400 Park Road Watertown, CT 06795																	
SCALE: 1:1		TITLE 8W8P HOUSING WITH 40 AMP PRESS-FIT POWER PLUGS																	
CUSTOMER DRAWING		<table border="1"> <tr> <td>DRAWN</td> <td>DATE</td> <td>CHECKED</td> <td>DATE</td> </tr> <tr> <td>JED</td> <td>6/30/99</td> <td>TLB</td> <td>6/30/99</td> </tr> <tr> <td>APPROVED</td> <td>DATE</td> <td>APPROVED</td> <td>DATE</td> </tr> <tr> <td>JMC</td> <td>6/30/99</td> <td>CCA</td> <td>6/30/99</td> </tr> </table>		DRAWN	DATE	CHECKED	DATE	JED	6/30/99	TLB	6/30/99	APPROVED	DATE	APPROVED	DATE	JMC	6/30/99	CCA	6/30/99
DRAWN	DATE	CHECKED	DATE																
JED	6/30/99	TLB	6/30/99																
APPROVED	DATE	APPROVED	DATE																
JMC	6/30/99	CCA	6/30/99																
A		<table border="1"> <tr> <td>DWG. NO.</td> <td>SHT. OF</td> <td>REV.</td> </tr> <tr> <td>RM8W8P-1019</td> <td>3 3</td> <td>E</td> </tr> </table>		DWG. NO.	SHT. OF	REV.	RM8W8P-1019	3 3	E										
DWG. NO.	SHT. OF	REV.																	
RM8W8P-1019	3 3	E																	