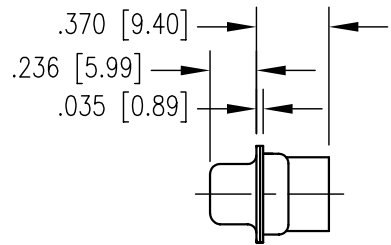
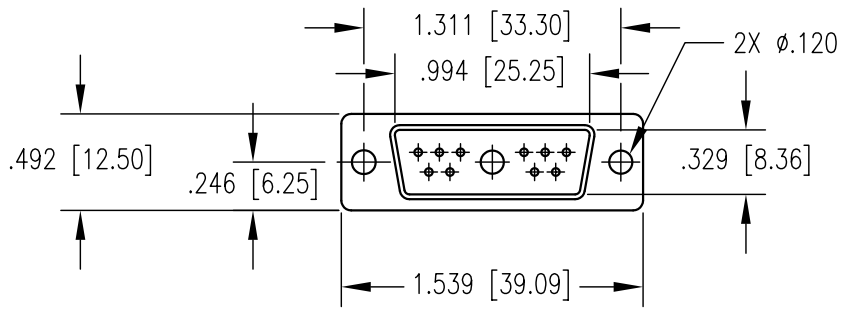
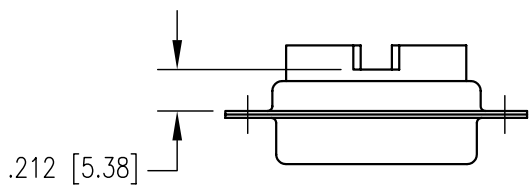


| REV | DESCRIPTION         | BY DATE         | APPD |
|-----|---------------------|-----------------|------|
| D   | REVISED PER ECR8787 | JCP<br>12/04/06 | JCP  |



CATALOG No. RP11W1P-10-ZB

NOTES:

- MATERIALS:  
SHELL: STEEL PER ASTM B568  
INSULATOR: GLASS FILLED POLYESTER-BLACK  
SIGNAL CONTACTS: NOT SUPPLIED WITH HOUSING. ORDER SEPARATE.
- FINISH:  
SHELL: YELLOW CHROMATE OVER ZINC PER ASTM B633

|  |                |  |                          |
|--|----------------|--|--------------------------|
| PER ASME Y14.5M-1994<br>UNLESS OTHERWISE SPECIFIED:<br>DIMENSIONS ARE IN INCHES [MM]<br>TOLERANCES:<br>DECIMALS .XX ± .01 [0.254]<br>.XXX ± .005 [0.127]<br>ANGLES ± 2° SCALE: 1:1 |                | <b>NORTHROP GRUMMAN</b><br><br>Winchester Electronics 62 Barnes Industrial Road North<br>Wallingford, CT 06492 |                          |
| <b>CUSTOMER DRAWING</b>  |                | TITLE<br>DM HOUSING-11W1P  |                          |
| DRAWN<br>JEM   | DATE<br>1/5/04 | CHECKED  | DATE                     |
| APPROVED   | DATE           | APPROVED   | DATE                     |
| <b>A</b>   |                | SDRP11W1P-10-ZB  | SHT. OF REV.<br>1 OF 1 D |